



WUYA

User Manual

Version: V1.01

WUYA APP Instructions for Use

1、Download APP

1.1 QR code download: Open your phone's Browser/Camera, scan the QR code to download and install the application



1.2 Download from the app store:

1.2.1 Domestic Apple phone users: Open the App Store, search for the "WUYA" application, download and install it.



1.2.2 Apple phone users abroad: Open the App Store, search for the "WUYA" application, download and install it.



1.2.3 Domestic Android phone users: Open the app stores of Huawei, Xiaomi, OPPO, and VIVO, search for the "WUYA" application, download and install it.

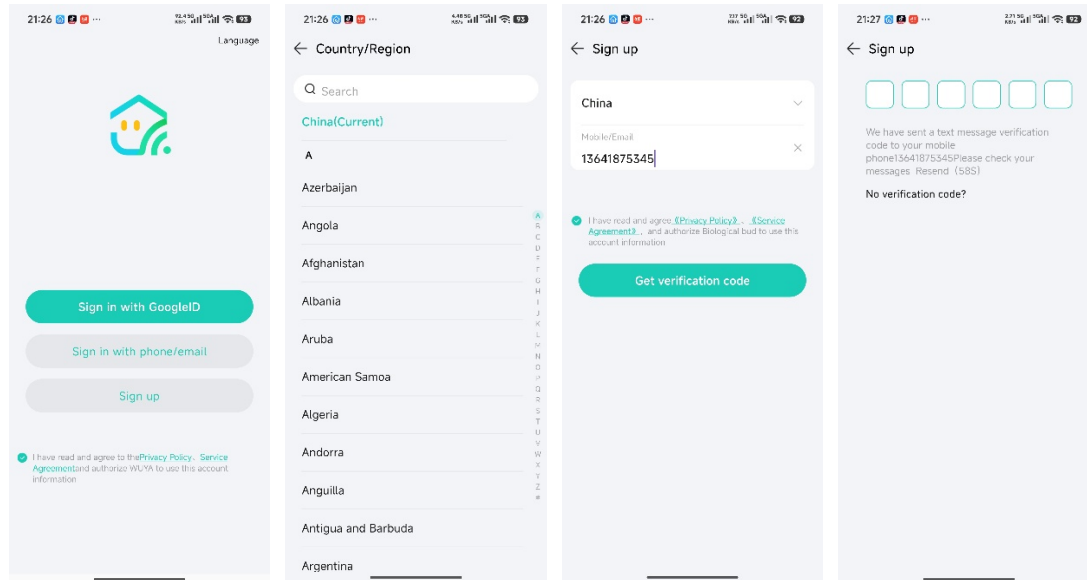


1.2.4 For Android phone users abroad: Open Google Play, search for the "WUYA" application, download and install it.



2、 Login & Sign up

After opening the "WUYA" APP, click on **【Register】**, then click on **【Country/Region】** to select your country, enter your phone number or email address, click on **【Get Verification Code】**, input the verification code received via phone or email, and finally click on **【Confirm】** to complete the registration. Click on **【Login】** to successfully log in to the APP.

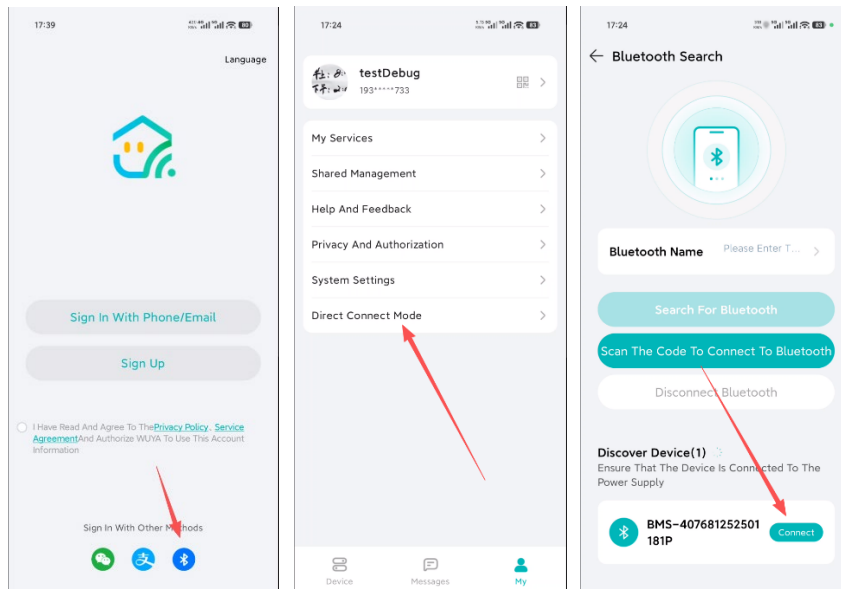


3、 Add Device

3.1 Turn on the device: Confirm that the equipment is in normal working condition

3.2 Add Device: After entering the APP, complete the device addition according to the following diagram

- When the user is not logged in to the APP, they can click the **【Bluetooth】** icon on the login page to enter the Bluetooth search page;
- When the user is logged into the APP, they can click on **【Device Direct Connection Mode】** on the **【My】** page to enter the Bluetooth search page;
- After scanning for devices on the **【Bluetooth Search】** page, click **【Connect】** ;



4、Device Details

4.1 Lead-to-lithium version

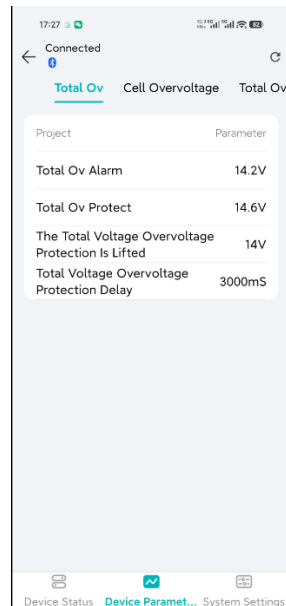
4.1.1 Summary Data

After clicking on the corresponding device, users can enter the summary data interface and view information such as device status, capacity, voltage, temperature, etc. Click the **【refresh button】** in the upper right corner to refresh the current interface. **Note: After clicking the **【refresh button】**, you need to wait a few seconds for the interface to refresh the latest data.**



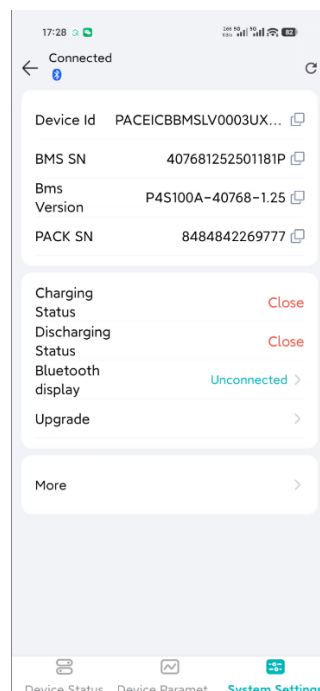
4.1.2 Device Parameters

After clicking **【Device Parameters】** at the bottom of the summary data interface, users can view the parameters of the current device. If they need to modify the device parameters, they can return to the modification page after entering the permission password on the **【System Settings】** page.



4.1.3 System Settings

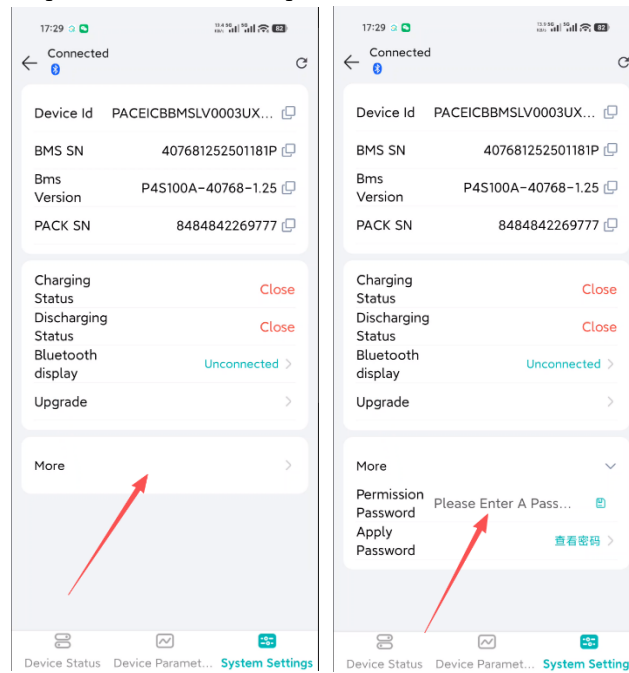
Users can view the system information of the device by clicking on **【System Settings】**, and can apply for input permission password by clicking on **【More】**.



4.1.4 Permission Password

Users can click **【More】** to enter their permission password. Users can

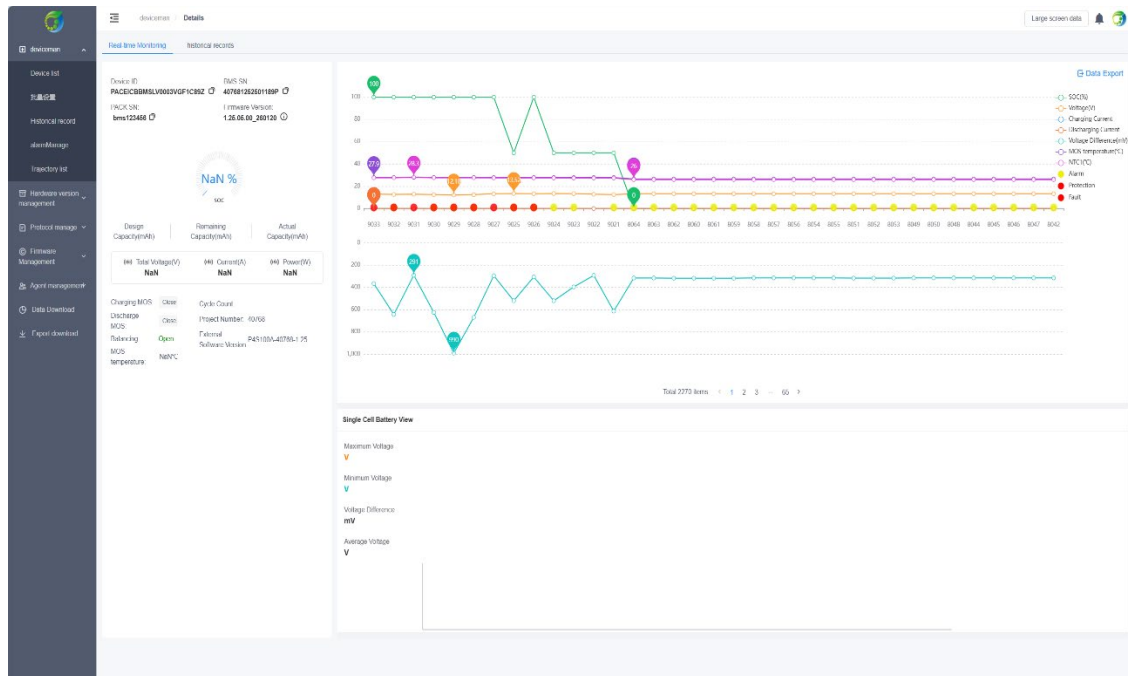
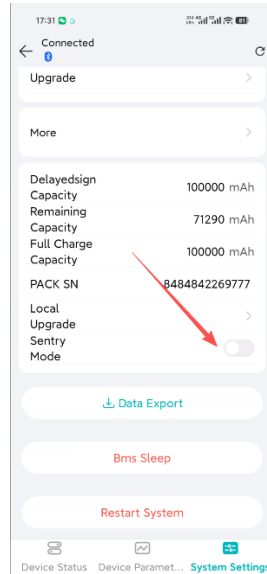
click **【Request Password】** to input the reason for requesting a password from the platform. The platform can view the user's request record by clicking the notification in the top right corner, and clicking **【Apply】** to set the password, expiration date, and number of attempts. The APP will then receive the password for input verification.



Device ID	电池数量	电池日期	Status	欠费日期	可用次数	Operation
PACEICBMSLV003V136818Z	1	2025/12/11 00:16	Processed	2025/12/9 11:00:34	0	
PACEICBMSLV003V136818Z	1	2025/12/11 17:54:57	Processed	2025/12/9 17:55:19	0	
PACEICBMSLV003VGF1C8BZ	1	2025/12/9 17:40:00	Processed	2025/12/22 17:42:20	0	
PACEICBMSLV003VGF1C8BZ	1	2025/12/9 10:33:40	Processed	2025/12/9 21:34:12	0	
PACEICBMSLV003VGF1C8BZ	1	2025/12/9 17:25:50	Processed	2025/12/16 17:26:00	0	
PACEICBMSLV003VGF1C8BZ	1	2025/12/5 17:38:18	Processed	2025/12/5 17:38:33	0	
PACEICBMSLV003VGF1C8BZ	123	2025/12/25 14:15:15	Processed	2025/12/30 02:15:46	200	
PACEICBMSLV003VGF1C8BZ	1	2025/12/7 15:31:59	Processed	2025/12/7 16:05:16	0	
PACEICBMSLV003VGF1C8BZ	1	2025/12/16 18:33:22	Processed	2025/12/16 18:33:25	0	

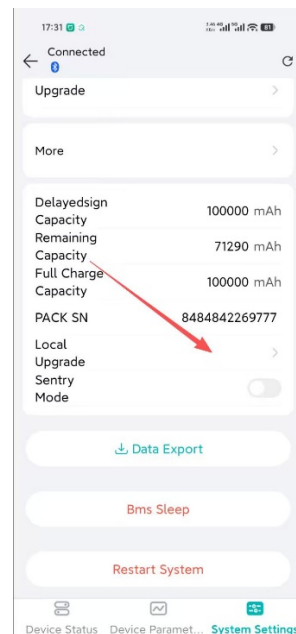
4.1.5 Sentry Mode

After the user enters their password, they can enter sentinel mode. Once in sentinel mode, the app will upload both historical and real-time data received from the device to the cloud for storage and display.



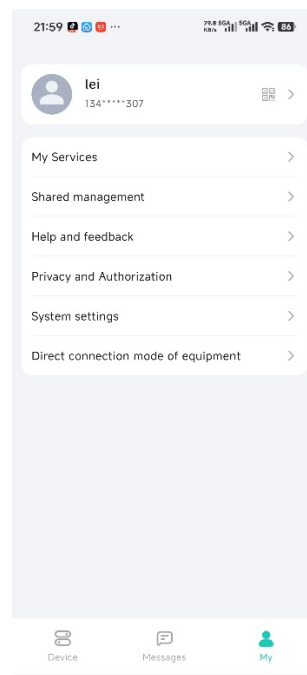
4.1.6 Local Upgrade

After entering the password, users can perform a manual upgrade by selecting the firmware in their phone to upgrade the device.



5、Personal Center

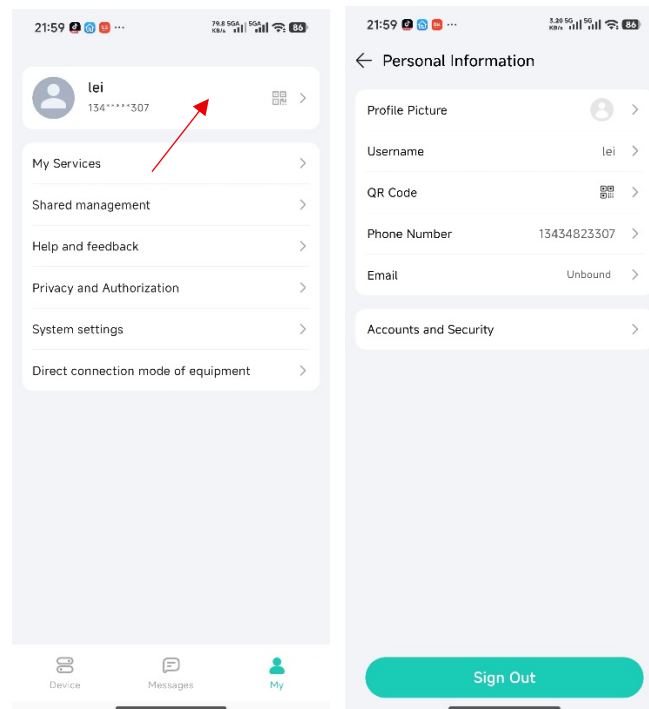
Clicking on **【My】** at the bottom of the main interface will take you to the personal center interface.



5.1 Personal Information

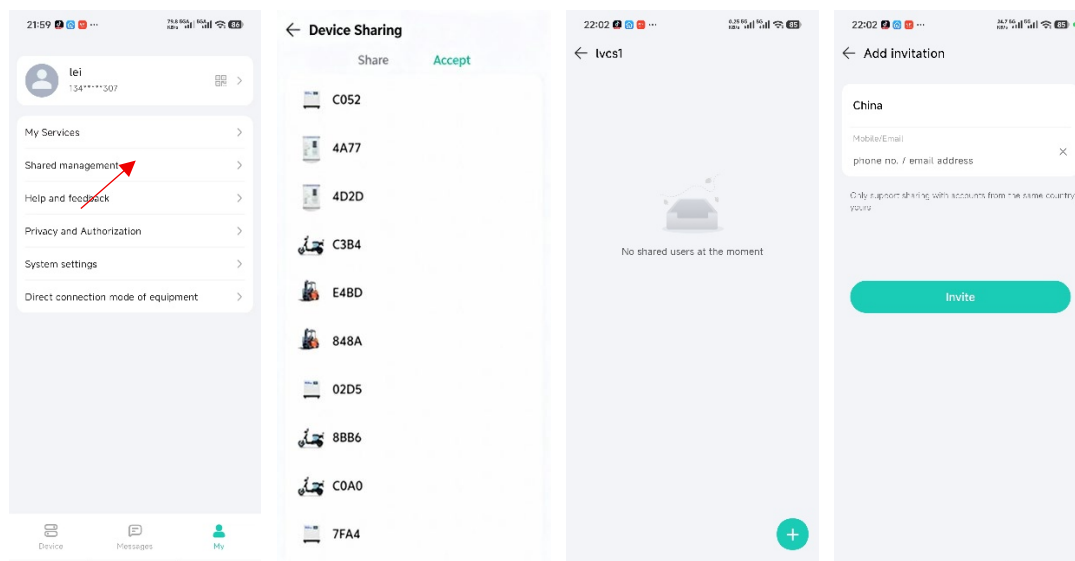
Users can click on the **【personal information】** option above to enter the personal information page, where they can set their avatar, username, phone number, and email information. Clicking on the **【QR code】** option will display the current user's QR

code, which can be scanned to share the device. After clicking on the **【account and security】** options, users can perform password changes and account cancellation operations. Click below to **【log out】** and return to the login and registration interface.



5.2 Shared Management

Users can click on **【Share Management】** to view the information of shared and received devices for their current account. After clicking on the device on the Share interface, users can click on the **【+】** to share the device with others



5.3 System Settings

Users can view all privacy and authorization information of the app in the system settings interface, as well as set some options for the app. Click to **【upload logs】** to upload app logs and user data information.

