

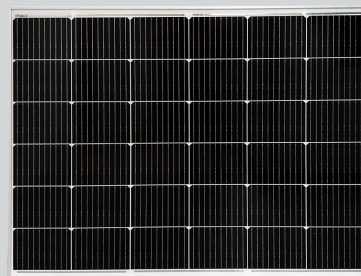


## DS3610M Series (36Cells) 210wp



### General Description

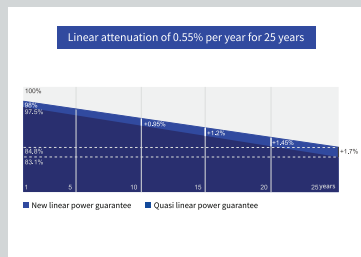
As a solar specialist with more than 30 years of experience in photovoltaic (PV), DuSol has made and continues to make significant contribution to undertaking ground-breaking progress in solar technology. DuSol photovoltaic modules are designed for applications with high power requirements. These quality MONO-PERC modules produce a continuous, reliable yield, even under demanding operational conditions. All DuSol DS series modules offer system integration configurations which are optimal both technically and economically and are suitable for installations in on and off-grid PV systems.



### Future

High-performance photovoltaic modules made of MONO-PERC (182x137)mm<sup>2</sup> silicon DuSol solar cells with module efficiencies of 20.5% or higher.

- 10 busbar technology for enhancing the power output.
- Anti-reflex coating to increase light absorption.
- Production controlled positive power tolerance from 0 to +5%.
- Only modules will be delivered that have specific power or more for high energy yield.
- Delivery of modules in 5watt intervals.
- Improved temperature coefficient to reduce power losses at higher temperatures.
- High power performance even at lower irradiation.



### Quality PV Modules from DuSol

Continual checks guarantee a consistently high level of quality. Every module undergoes visual, mechanical, and electrical inspection. This is recognizable by

- 10 years product guarantee.
- 25 years linear performance guarantee.
- Minimum 97% of the specified minimum power output during the first year.
- Modular design gives the end customers the power of choice of capacity
- Compatible with most of the available Hybrid inverters
- Maximum 0.55% annual reduction of the power output for the following 25 years.



Desert sand storm  
test passed  
(MITC INTERCERT)



Salt spray test  
passed



### Certificates and approvals

All modules are tested and Certified according to

- IED/EN 61215 and IEC/EN 61730, Application class A
- Protection class / CE
- ISO9001 (DAC)



## Electrical Specification (STC)

### DS36210M

Nominal Power	P <sub>max</sub>	210W
Open-circuit Voltage	V <sub>oc</sub>	24.84V
Short Circuit Current	I <sub>sc</sub>	10.19A
Voltage at Maximum Power	V <sub>mpp</sub>	21.6V
Maximum Power Current	I <sub>mpp</sub>	9.72A
Efficiency Module	n	20.55%

STC Standard Test Conditions: Irradiance 1,000W/m<sup>2</sup>, AM 1.5, Cell Temperature 25°C. Rated Electrical Characteristics are within + % of the indicated values of I<sub>sc</sub>, V<sub>oc</sub>, and 0 to 5% of P<sub>max</sub> (power measurement tolerance ± 5%).



## Electrical Specification (NOCT)

### DS36210M

Nominal Power	P <sub>max</sub>	155.4W
Open-circuit Voltage	V <sub>oc</sub>	22.97V
Short Circuit Current	I <sub>sc</sub>	15A
Voltage at Maximum Power	V <sub>mpp</sub>	19.74V
Maximum Power Current	I <sub>mpp</sub>	7.87A
Cell Tem (°C)	T deg	47.5°C

NOCT (47.5°C): Module operating temperature at 800 W/m<sup>2</sup> irradiance, air temperature of 20°C, wind speed of 1 m/s



## Limits

Max Permissible System Voltage	600VDC
Max Reverse Current	30A
Operating Tem	(-40 to +85) deg C
Max Mechanical Load	2400 N/m <sup>2</sup>



## Mechanical Data

Lenght	1134mm(+ / -3.0 mm)
Width	910mm(+ / -2.0mm)
Depth	25mm(+/-0.8mm)
Weight	10.5kg



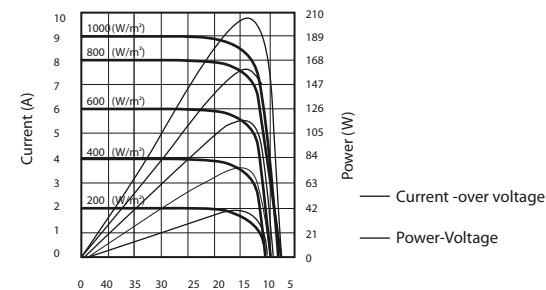
## Temperature Co -efficient

P <sub>max</sub>	(-0.34) %/°C
V <sub>oc</sub>	(-0.27) % /°C
I <sub>sc</sub>	(+0.045) % /°C

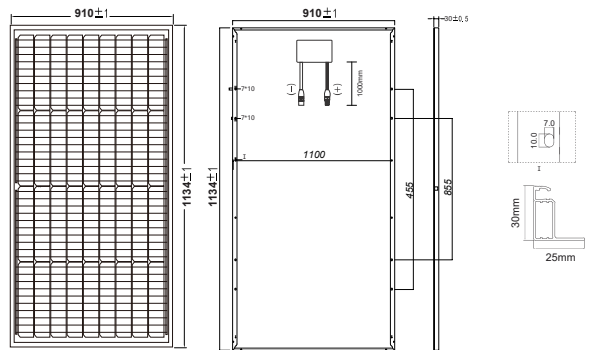


## Characteristics

Characteristics curves: Current / Power against voltage (cell temperature: 25 C)



## Rear View



## General Data

Cell Type	Mono-PERC 10BB Cells (182x137)mm <sup>2</sup> 36 cells in series
Front Glass	Tempered Low Iron Pattern Glass, 3.2mm
Module Frame	Anodized Aluminium, Silver
Connection Box	PPO Plastic, IP68, 3by pass diodes
Cable	4mm <sup>2</sup> , Lenght 1000mm
Connector	SMK (MC4 compatible), Typ CCT 9901-2361F/2451F (katalognr. P51-7H/R51-7), IP67



## Registration

DuSol Solar guarantees the safety, quality and value of your product over many years the only thing we ask you to do is to register your modules with the serial number, so that we can send you the guarantee certificate to register your modules quickly and easily at [www.DuSol.ae](http://www.DuSol.ae)

SCAN HERE



[www.DuSol.ae](http://www.DuSol.ae)

Superior Durability , High Efficiency

Address: Office # 5,6 & 7 - States Building, Next to Mount Royal Hotel, Baniyas square, DEIRA, Dubai

PO Box: 381057 United Arab Emirates

Phone: +971-4-2231185 Fax: +971-4-2271505

Email: [Info@dusol.ae](mailto:Info@dusol.ae) URL: [ww.Dusol.ae](http://ww.Dusol.ae)