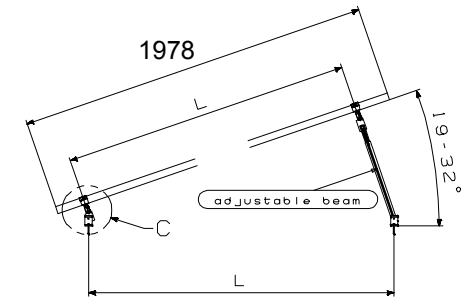
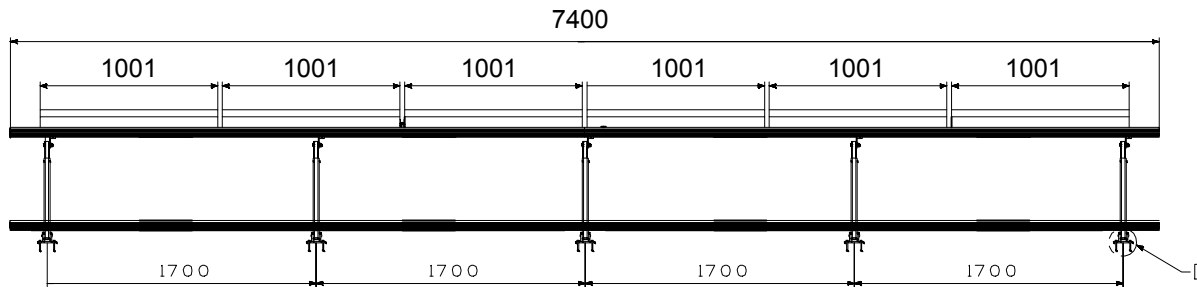
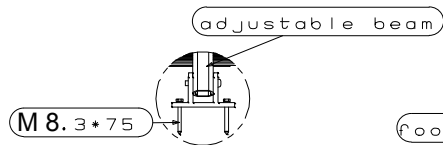


MAXIMA MOUNTING STRUCTURE L6 (FOR 6 PANELS)

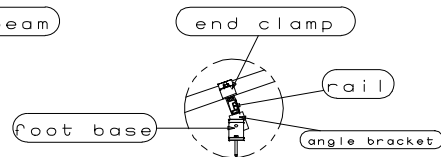


angle adjustable
19-32degree

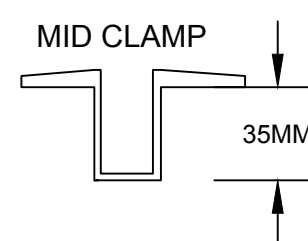
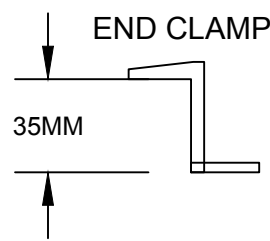
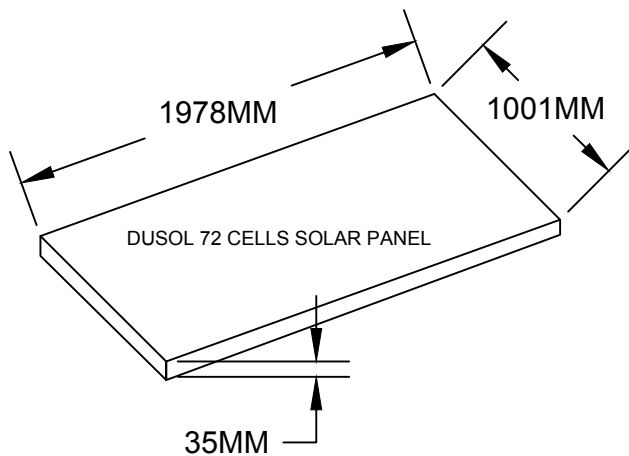
Instruction:
1 adjust the angle according
to the distance of "L"



DETAIL D
SCALE 1:3



DETAIL C
SCALE 1:5



MAXIMA STRUCTURE FOR 6 PANELS