

Installation

[1] Installing Walkway

Step 1: Designing the walkway field

According to the specification of walkway, calculate the length of support, distance and span between two clamps.

1. Height of the walkway field: support height vertically
2. Width of the walkway field: number of walkway horizontally x width of the walkway
3. Distance between supports (according to the usage and dimension of walkway)

Installation

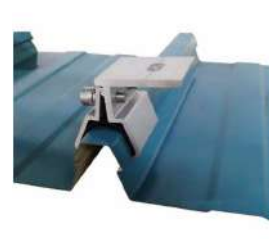
[1.1] Installing basement and supports

Step 1: Installing support

Mark the location of supports, fasten the supports with suitable decided bolts and nuts.



Note: for kliplok metal roof, the kliplok clamps installation first



Finished supports fixed to kliplock clamp



Step 2: Installing the walkway

Put the walkway in all marked position



Installation of the M clamps to connect walkway and support together. Slide the pre-assembled nuts to supports and then fasten the M8 bolt firmly using the Allen key. Make sure the walkway fixed to the supports. The connection is finished.



Step 3. Installing the clamps

M clamps to connect the walkway firmly to the support, while the C clamps to connect two walkway together at sides.



Step 4. Finish installing all the walkway

Repeat doing last step till finish installing all the walkway. Check the whole and re-fix all outer screws after finish installing the walkway.

