



LOW VOLTAGE ENERGY STORAGE SYSTEM

FOR RESIDENTIAL AND SME

THE GUIDING PHILOSOPHY OF THE GROWTH AND DEVELOPMENT OF APEX POWER CONCEPTS LIES IN ITS QUEST FOR QUALITY AND ITS UNTIRING COMMITMENT TO EXCELLENCE IN SERVICE".

Apex Power Concept - Culture & Mission

COMPANY PROFILE

Ever since its establishment in 2003, Apex Power Concepts has emerged as a dynamic and confident pace setter in the field of solar energy systems, energy storage systems and hybrid power systems that include multiple sources of energy like generators, wind turbines, solar and batteries. Over the years, the company has grown from being a trading company to a virtually integrated group of solar companies.

Apex Power Concepts is a sole proprietor of the following companies.

A. DUSOL Industries : Solar PV modules manufacturing based in Dubai, UAE.

B. Apex Power Concepts Trading LLC: Solar PV components distributor.

C. Apex Power Concepts Solar Energy LLC : Solar PV systems installations and EPC.

The guiding philosophy of Apex Power Concepts is to provide quality products at competitive prices - products that offer highest VALUE FOR MONEY. This has been possible through two distinguished brands that have become synonymous to quality.

A. MAXIMA
B. DUSOL

Keeping true to its tradition of partnering with companies that have become industrial leaders in offering solar PV components, Apex Power Concepts has developed strong partnerships with wide spectrum of solar components companies.

- 1. GRUNDFOS - Denmark:** DC and AC pumping systems for irrigation from 1m³ to 1000m³ per day with pumping head of upto 400m.
- 2. VICTRON - Netherlands :** Solar electronics manufacturer including charge controllers, inverters, converters and battery protections.
- 3. STECA - Germany :** Solar Electronics for off grid and on grid applications.
- 4. MORNINGSTAR - USA :** Solar Charge Controller specialist for off grid solar applications.
- 5. SCHNEIDER ELECTRIC - France :** Solar Electronics for medium to large off grid and on grid power plants.
- 6. EATON - USA:** DC and AC protection for solar PV systems.
- 7. BENY - China :** DC protection and prefabricated protection systems.
- 8. ROTOMAG - India :** DC submersible and surface pumps for irrigation.

Key activities and areas of expertise

1. Solar Home systems - Off grid systems.
2. On grid Systems - Commercial and industrial levels.
3. Remote Solar Industrial Applications viz., cathodic protection, street lighting, solar telecom and ELV applications, Vaccine refrigerators and more.

Apex Power Concepts maintains ready stock of solar PV components in Dubai to meet demands of large volume orders that need quick fulfillment.

Alternatively, the products are available through e-commerce website www.MAXIMA.solar

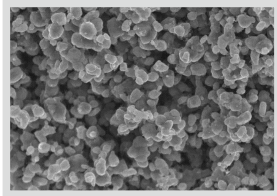
CULTURE AND MISSION

The guiding philosophy of the growth and development of Apex Power Concepts lies in its quest for quality and its untiring commitment to excellence in service. Apex Power Concepts has emerged as an internationally acclaimed specialist supplier and system integrator of Solar PV and energy storage systems, and is moving confidently to face new challenges of changing needs and technology.

CUSTOMER PROFILE

The Company has been successfully undertaking wide range of projects and supply contracts both within the region of GCC as well as internationally. Access to wide range of value for money products has helped Apex Power Concepts capture a large portion of the African, Asian and CIS markets. In an effort to further increase its growing customer base, Apex Power Concepts is constantly adding new and reliable business partners in should be from various parts of the world. It has taken initiative to stronghold its presence in GCC to support its coveted brand products.

VERTICAL INDUSTRY INTEGRATION CHAIN



MATERIAL



CELL



BATTERY MODULE

ADVANTAGE

- Built in intelligent BMS all-round intelligent protection
- With intelligent charging over-current limiting protection
- The appearance and color can be customized according to your preferences
- Product registered design, appearance, utility model and other patents
- Battery cycle life can reach more than 4000 times
- The battery adopts automobile power battery, which supports fast charging and discharging
- Built in automatic protection, overcharge, over discharge and over temperature conditions
- Work indication normal charge, normal discharge, normal work, alarm, etc.
- Real time all-round monitoring, efficient operation
- Support parallel use, users can connect in parallel according to actual power needs, up to 15P
- The product RS485/CAN is matched with photovoltaic inverters of many well-known brands for communication
- The communication protocol can be changed according to the communication protocol of the photovoltaic inverter provided by the customer
- Intelligent MCU digital display screen, real-time and high-speed display of product working status and each item of data
- With short circuit protection function
- With intelligent charge equalization management function (passive equalization)
- RS232 communication is connected with the upper computer software to monitor the battery pack status and set the battery pack parameters in real time
- Provide one dry contact output function
- Built in 6-channel temperature sampling ($\leq 3^{\circ}\text{C}$)
- Heating function description (optional)

SPECIFICATION



| BASIC PARAMETERS | JXLFP100-48 | JXLFP200-48 |
|--------------------------------|---------------------|---------------------|
| Nominal Voltage (V) | 48 | 48 |
| Nominal Capacity (WH) | 4800 | 9600 |
| Nominal Capacity (Ah) | 100 | 200 |
| Depth of Discharge | 95% | 95% |
| Dimension (mm) | 505/T550*484*177 | 550/T600*484*223 |
| Weight (Kg) | ≈47 | ≈86 |
| Discharge Voltage (V) | 37.5~54.7 | 37.5~54.7 |
| Charge Voltage (V) | 54~54.7 | 54~54.7 |
| Charge / Discharge Current (A) | 50 (Recommend) | 50 (Recommend) |
| | 100 (Max) | 100 (Max) |
| Communication Port | 120 (Peak@ 15s) | 120 (Peak@15s) |
| | RS485,RS232,CAN | RS485,RS232,CAN |
| Single string quantity(pcs) | 15 | 15 |
| Discharge Temperature°C | -25~60 | -25~60 |
| Charge Temperature/°C | 0~50 | 0~50 |
| Protection Class | IP55 | IP55 |
| Humidity | 5%~85% | 5%~85% |
| Altitude (mJ) | <2000 | <2000 |
| Design life | 15+Years (25 /77°F) | 15+Years (25 /77°F) |
| Cycle Life | >6000, 25°C | >6000, 25°C |
| Authentication Level | CE /UN38.3 | CE /UN38.3 |