


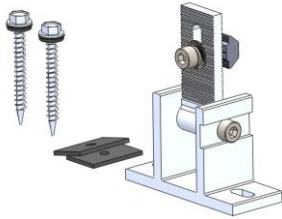
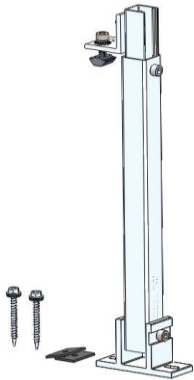
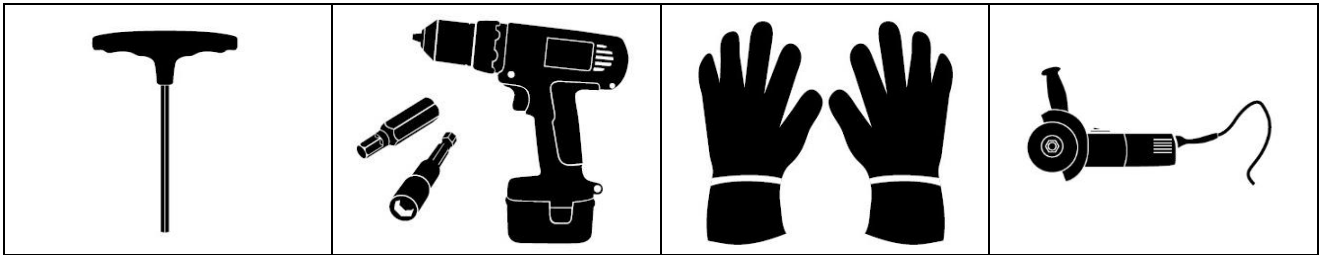


*Maxima Adjustable Tilt Mounting Kit
Installation Manual V1.0*

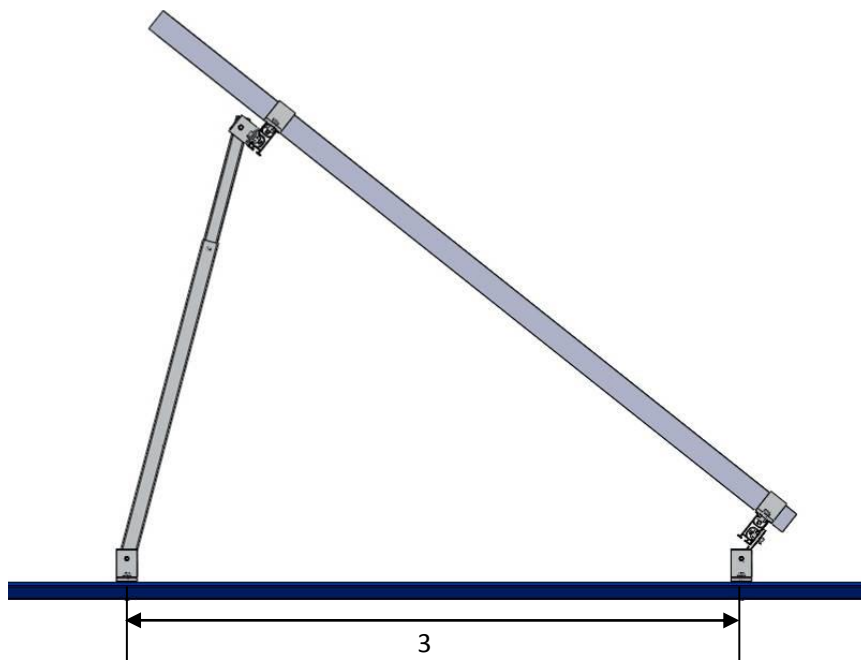
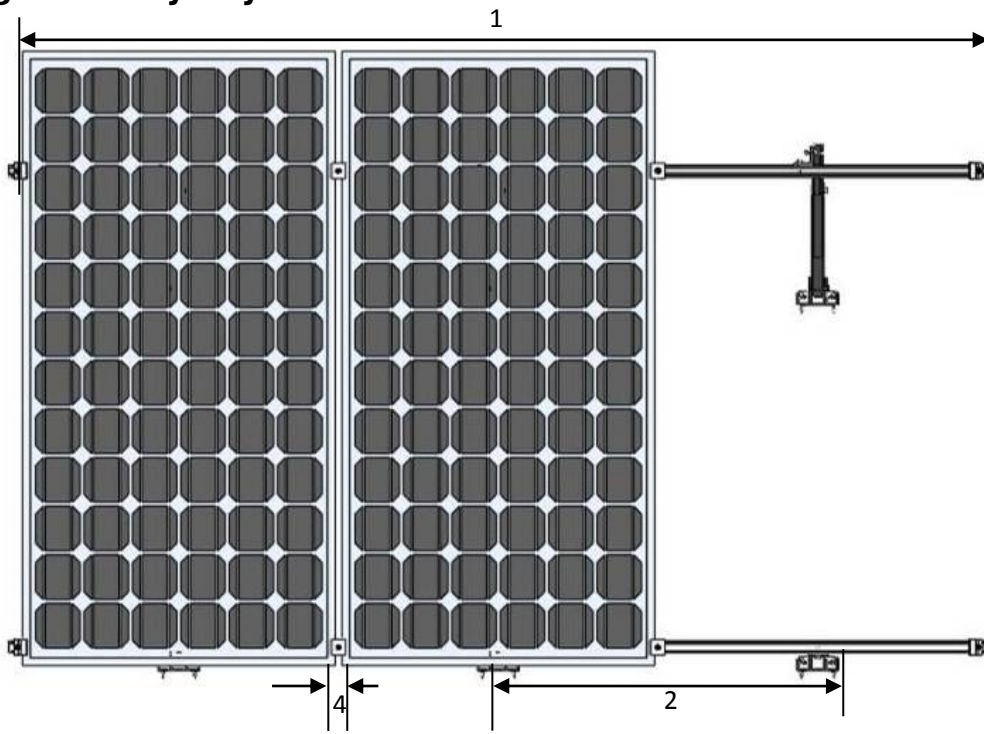
Components List

No.	Product Name & Item No.	Picture	Material	Remark
1	Rail EZ-ER		AL6005-T5	
2	End Clamp EZ-SEC		AL6005-T5	Includes: a. one piece of A2-70 M8 Hexagon screw b. one piece of Aluminium fixing nut
3	Inner Clamp EZ-SIC		AL6005-T5	Includes: a. one piece of A2-70 M8 Hexagon screw b. one piece of Aluminium fixing nut
4	Ajustable Front Leg EZ-FL		AL6005-T5	Includes: a. two pieces of 12Φ screw 35mm embedment b. one piece of Aluminium fixing nut c. two pieces of A2-70 M8 Hexagon screws d. one piece of M8 antiskid washer e. one piece of M8 spring washer f. two pieces of EPDM waterproof gaskets
5	Adjustable Rear Leg EZ-RL		AL6005-T5	Includes: a. two pieces of 12Φ screw 35mm embedment b. two pieces of Aluminium fixing nuts c. four pieces of A2-70 M8 Hexagon screws d. one piece of M8 antiskid washer e. one piece of M8 spring washer f. two pieces of EPDM waterproof gaskets

Tools Required for Installation



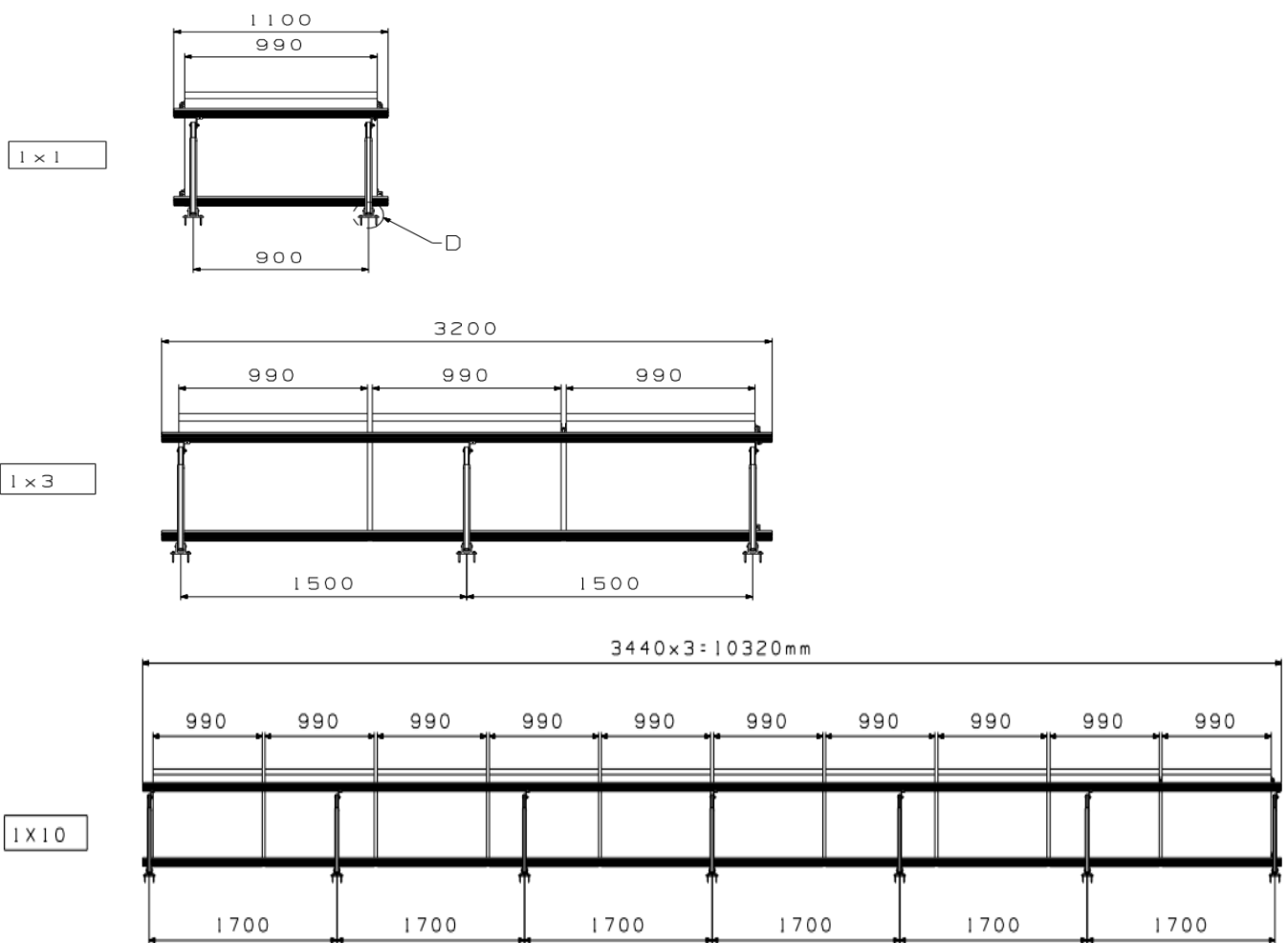
Planning the Array Layout



Planning the array layout

1. Array width = the number of modules in the horizontal direction x (module width + 11/16 in (18 mm)) + 1-1/4 in (32 mm)
2. The distance between adjacent modules = module width + 11/16 in (18 mm)
3. The distance between the front support legs and the rear support legs = 1250mm~1400mm, the distance between front and rear support legs should be consistent on the same mounting array.
4. The distance between modules = 11/16 in (18 mm)

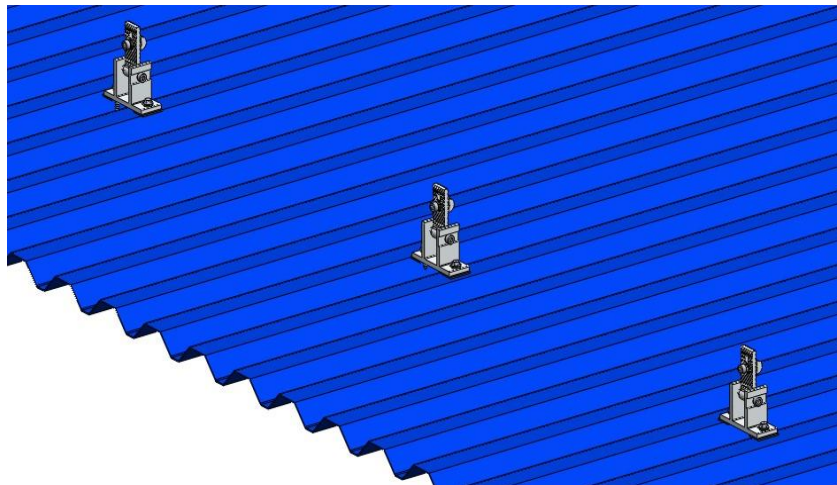
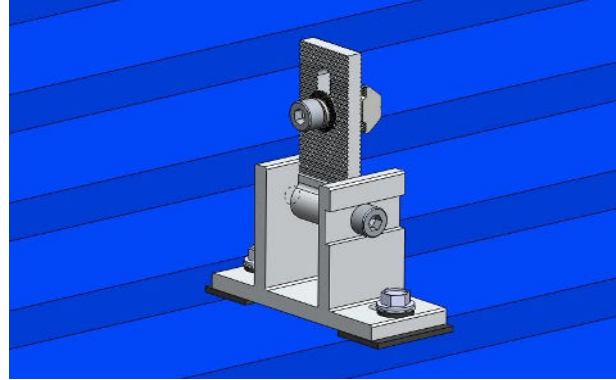
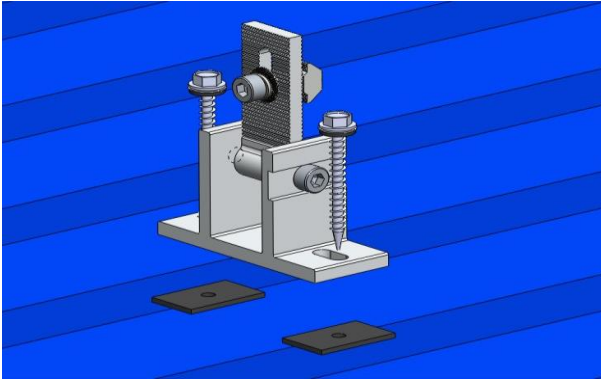
Determine the Maximum Rail Support Spacing



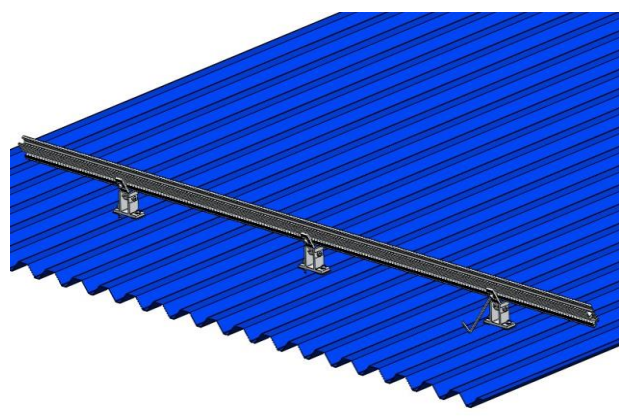
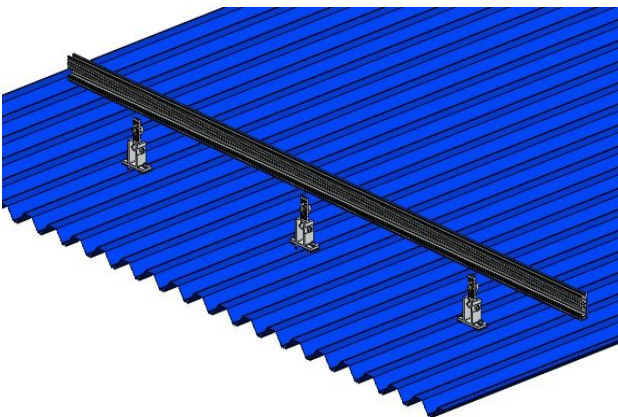
- Min. 2- Φ 6.3x80 wooden screws.
- Min. 35mm embedment to existing timber batten.
- Min. steel batten/purlin thickness=0.6mm.

Installation Steps

1. In accordance with the planned array layout, place the adjustable front support feet and legs in position using the EPDM waterproof gaskets in between the foot and the roof material, Screw each foot through the roofing material into the purlins using the supplied wood screws taking care to place all feet in a straight line.

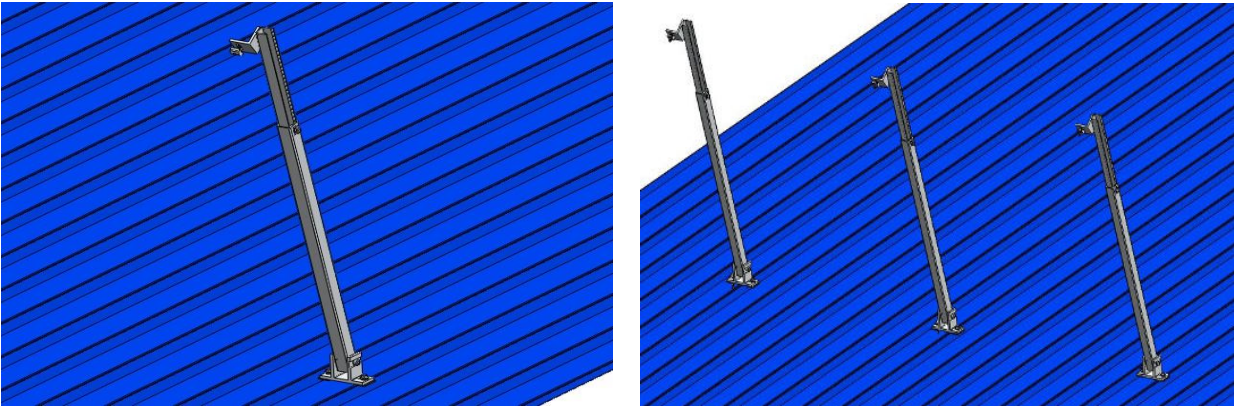


2. Use the fixing nuts to attach the rail to the adjustable front support leg. Tighten the M8 hexagon screw securely.

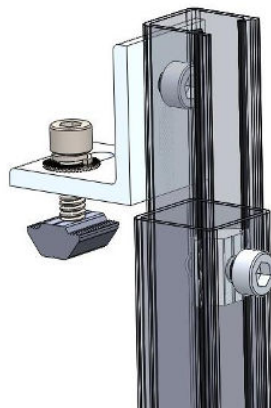


3. Also In accordance with the planned array layout, place the adjustable rear support feet and legs in position using the EPDM waterproof gaskets between the foot and the roof material,

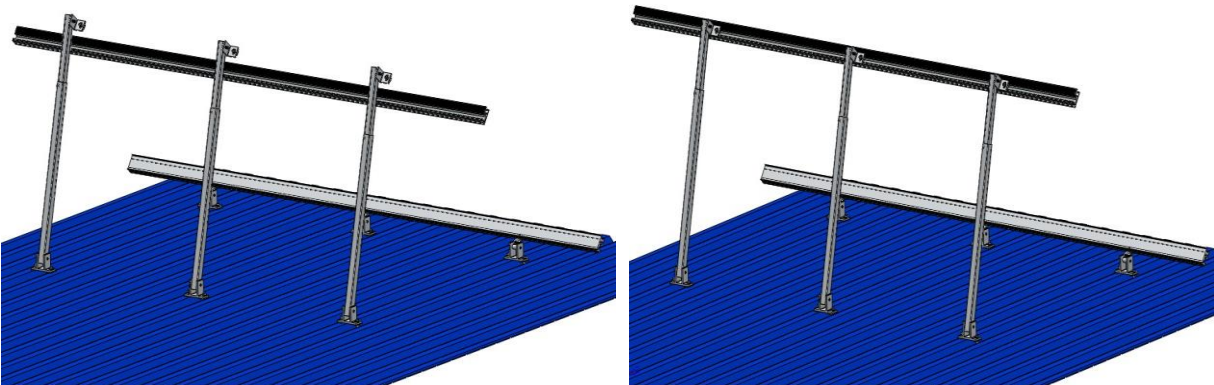
Screw each foot through the roofing material into the purlins using the supplied wood screws taking care to place all feet in a straight line and in a matching position to the front support feet and legs.



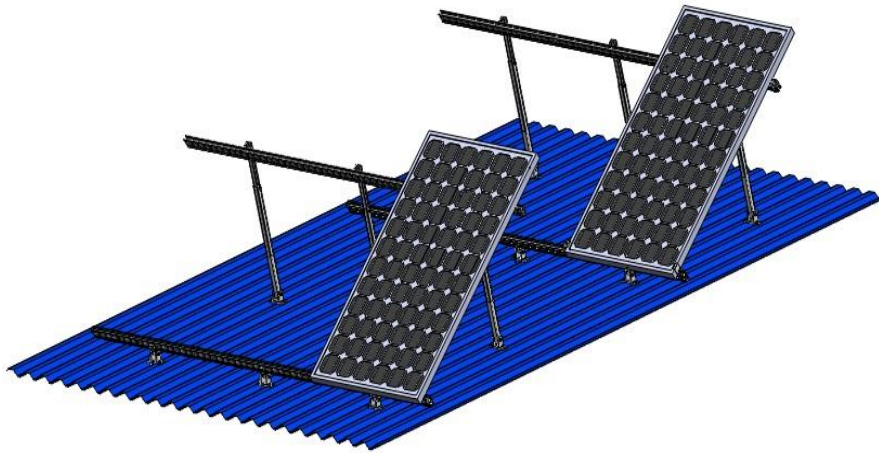
Adjust the size of the rear leg assembly by extending the central angle bar to the desired length. Use the supplied fixing nuts to secure the two sections in place.



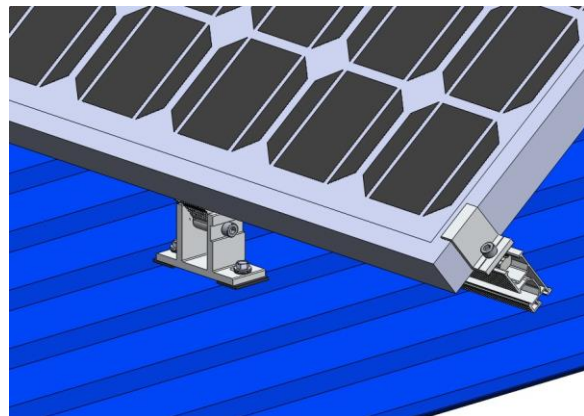
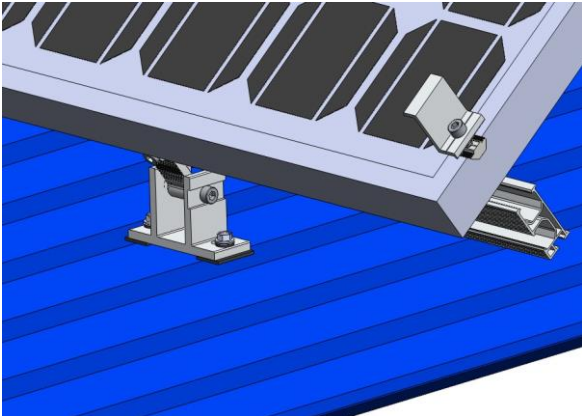
4. Use fixing nuts to attach rail to adjustable rear leg. Tighten M8 hexagon screw securely.



5. Place solar panels on the rails as shown.



6. Use end clamps with M8*25 Hexagon screw and fixing nuts to attach solar panels to the rails. Adjacent solar panels are attached by using mid clamps with M8 Hexagon screws.



7. Repeat steps until installation is completed.

