

# Monitor

## Overview

product name Monitor  
Monitor is not a necessary part of pump system .but it provides more functions and protections for pump system. Making the system more convenient and intelligent. For example intelligent switching of AC/DC power supply;Floating ball interface terminal etc.

## Features

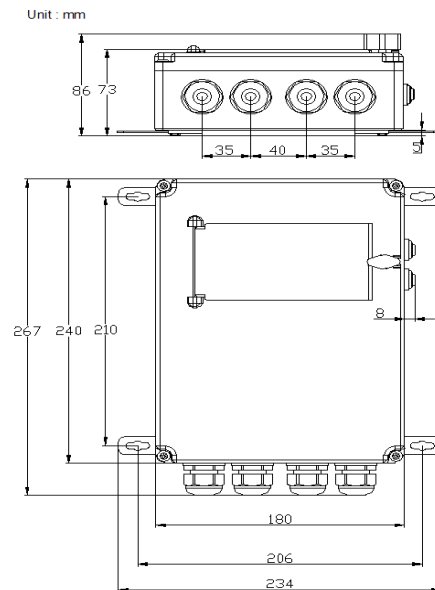
- .AC/DC Intelligent Switching
- .Overvoltage protection;AC 265V;DC480V
- .Power display
- .Floating Ball Interface of Well and Water Tank
- .Tips for full protection of water tank
- .Manual ON/OFF
- .Automatic start-up and shutdown of generator
- .Surge protection
- .Overhead protection(need flow meter)

## Technical data

- .Voltage:1X90-265VAC;40-480VDC
- .Current: ACmax:12A ;DCmax:10A
- .Enclosure Class:IP 65

## Dimension&Weight

- .Net Weight.1.6kg
- .Installation dimension:210\*206mm
- .Overall dimension:267\*180\*86mm
- .Packing Dimension:305\*205\*10mm



## Note:

- \* The Monitor is IP 65 Rated however it is recommended that it is not mounted in direct sunlight
- \* VOC (V) Volts open circuit nothing connected;Vmp (V) Volts maximum power point under load;Exceeding limits may cause serious harm or irreparable damage