

DIGITAL SOLAR GEL BATTERY

High-tech / Non-spillable / Deep cycle

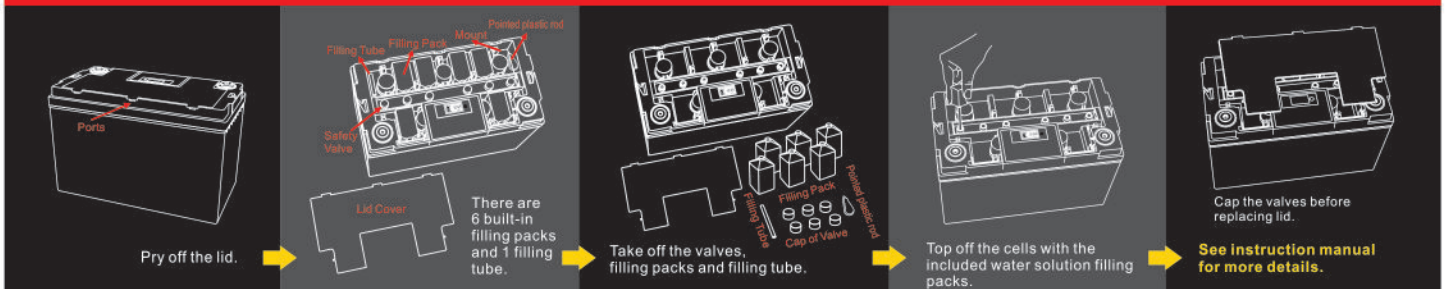
Our advanced technology incorporates an integral digital display, which shows the charge level and the number of days since the battery was put into service. Our smart battery alerts the user when the charge level is low. An alert in form of alarm is also provided when the health (capacity) of the battery falls below a certain level, allowing users to remedy this state of sub-optimal performance. Battery cells are easily accessible under the lid, and can be topped off – using the included refill packs - with little effort to extend battery life and improve performance.



PATENTED PRODUCT - ALL RIGHTS RESERVED

All models include two filling packs, EXCEPT model #SBMT-12DGD-20.

Follow the diagram to top off battery cells with the water-based solution (included). With proper maintenance, batteries in service for 400-500 days may see their longevity extended by as much as 15-30 percent.



⚠ Attention: When removing the cover sheet, the rubber safety valve cap may automatically pop up, a normal phenomenon.

APEX POWER CONCEPTS - DUBAI

#4, #5, 7-States Building, Baniyas Square, P O Box 378542, Dubai, United Arab Emirates

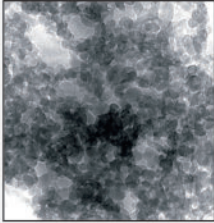
Tel: +971 4 2231185

E-mail: info@ApexPowerConcepts.com

Website: www.ApexPowerConcepts.com

DIGITAL SOLAR GEL BATTERY

High-tech / Non-spillable / Deep cycle



Our battery utilizes gel electrolyte instead of acid, resulting in superior performance.

- ◆ Higher capacity.
- ◆ Performs well even in low temperatures. Capable of producing starting currents in environments as low as -50 degrees Celsius.
- ◆ Stable performance in high temperatures, up to and beyond 65 degrees Celsius.
- ◆ Achieves longer service cycle life than normal lead-acid batteries.



Test Capacity Volt Monitor

Press the PUSH button and check the working date.



The recording of working date



Please follow either method 1 or 2 to activate the battery's date-record function. Once activated, the digital counter will display "001 day"

1. Battery voltage is higher than 13.5V for more than 48 hours
2. Battery voltage is higher than 13.4V, and reduce to be lower than 12.8V within 48 hours



Alarm: indicates diminished capacity or low voltage.